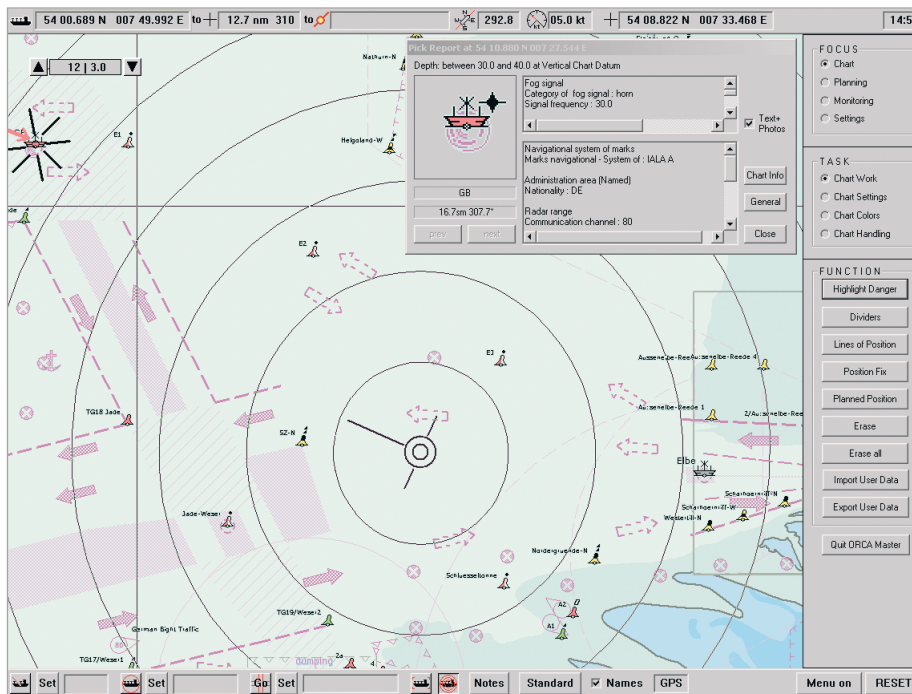


Orca Master

Ocean Runner Chart Assistant

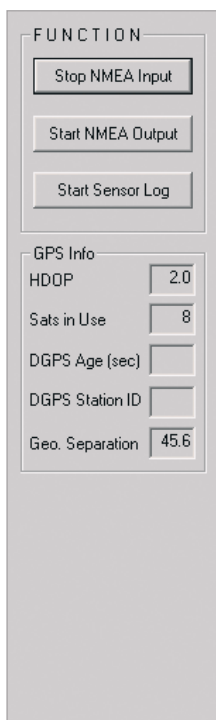
Versatile navigational software for the professional user



The features of the ORCA Master are defined by the “Performance Standards for Electronic Chart Display and Information Systems” of the International Maritime Organization (IMO), the “S-57 Transfer Standard for Digital Hydrographic Data” and the “S-52 Specifications for Chart Content and Display Aspects of ECDIS” of the International Hydrographic Organization (IHO). The ORCA Master supports traditional chart work like navigational calculation as well as chart updating and route planning. Besides Electronic Navigational Charts (ENC) ORCA Master also reads ARCS and BSB raster charts thus providing coverage for practically all regions.

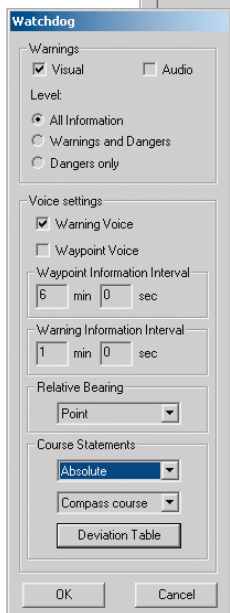
The ORCA Master is implemented by means of the Seven-Cs EC2007 ECDIS Kernel library. This library is the basis for type approved ECDIS systems that comply with the IEC61174 standard.

- Navigational functions for distance / bearing calculations
- Automatic loading of ENCs depending on own ship position and display scale
- Detailed query of chart features (Pick Report)
- Anti-grounding alarm functions
- Display of ARPA and AIS targets
- Optional voice output for messages and warnings
- Route planning



Signal Quality
Information on
GPS signal qual-
ity at a glance.

Name	(local datum)		<----- To Next Waypoint ----->				<---- Ship ---->		
	Latitude	Longitude	TC[°]	CC[°]	DTG[nm]	Speed	TTG[h]	DTG[nm]	TTG[h]
WP_001	53 56.543 N	007 54.376 E	310.7	310.9	8.7	10.0	0:52		
Ship Position	54 00.714 N	007 49.892 E	290.7	290.9	4.2	-	--	4.2	--
* WP_002	54 02.191 N	007 43.224 E	256.6	256.9	49.3	10.0	4:55	49.3	--
WP_003	53 50.763 N	006 22.035 E	251.2	251.9	67.4	10.0	6:44	67.4	--
WP_004	53 29.016 N	004 34.745 E	200.8	202.2	19.7	10.0	1:58	19.7	--
WP_005	53 10.619 N	004 23.087 E	229.6	231.0	22.3	10.0	2:13	22.3	--
WP_006	52 56.181 N	003 54.930 E	180.0	181.6	15.7	10.0	1:34	15.7	--
WP_007	52 40.528 N	003 54.930 E	135.0	136.5	14.6	10.0	1:27	14.6	--
WP_008	52 30.230 N	004 11.838 E	100.5	101.9	13.6	10.0	1:21	13.6	--
WP_009	52 27.751 N	004 33.725 E	-	-	-	-	--	-	--



Watchdog Multiple settings in the Watchdog dialogue window ensure safe navigation.

Waypoint List Detailed information for comfortable route planning.

ORCA Master uses display engine of type approved ECDIS.

- Works with GPS and DGPS receivers
- Corrects magnetic to true heading using World Magnetic Model (WMM 2000) and deviation table
- Interfaces with standard AIS NMEA (IEC 61993-2) transponder, and R3 AIS (GP&C) transponder
- Uses type approved SevenCs Presentation Library for ECDIS
- Imports ENCs (S-57) charts, ARCS and BSB charts, and SevenCs directENC format
- Checks and applies vector and raster chart updates
- Handles both north up and head up mode
- Features anti-grounding functionality based on ENCs
- Built-in ship simulator using integrated mathematical model for ship dynamics
- Displays true scale and fixed size own ship symbol
- Includes interface to **ChartWorld**



For further information please visit
www.orcanavigator.de

www.sevencs.com