



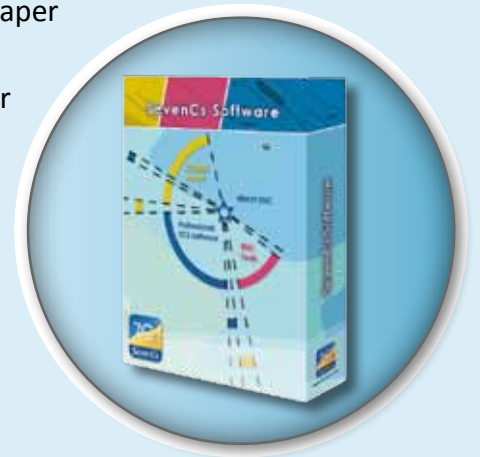
# ENC Cartographer

## PRODUCT DESCRIPTION

ENC Cartographer is the paper chart production and maintenance component of the ENC Tools suite. It allows you to create and maintain INT1/INT2 compliant paper charts from your S-57 ENC data source.

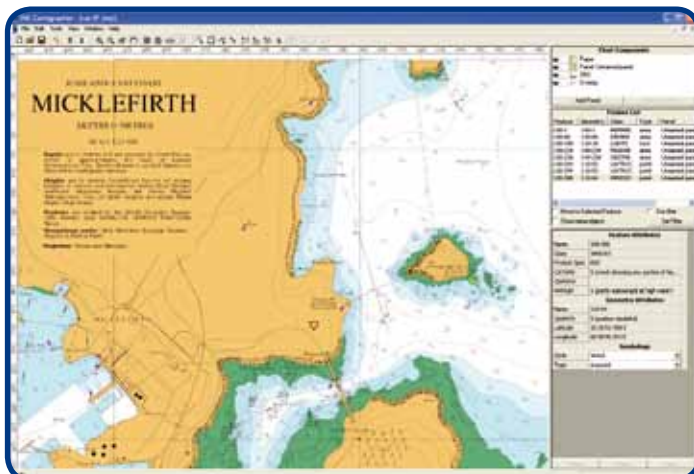
ENC Cartographer can be operated as a stand-alone application or integrated with other ENC Tools. It can be used to create official paper charts or special purpose low-run custom charts and outputs directly to a printer/plotter or to a file.

Source ENC or ENCs are not modified by the editing in ENC Cartographer and remain as the single point for maintaining the paper product. ENC Cartographer's editing tools allow cartographic work to be carried out quickly and efficiently, ensuring both the ENC and Paper products aligned and up-to-date.

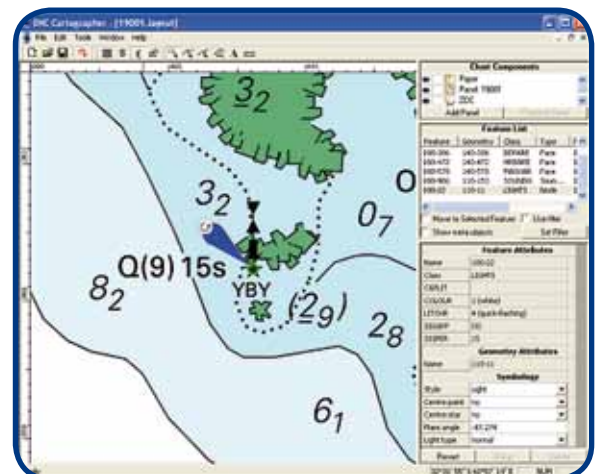


## PRODUCT HIGHLIGHTS

- ⇒ Charts can be formatted to include plan/s and/or insets of differing scales and projections.
- ⇒ IHO INT1/ INT2 grids and graticules are automatically generated on import
- ⇒ Fast, efficient tool set for performing cartographic edits with integrated standard chart note library
- ⇒ ZOC diagram and Tidal Stream tables generated from ENC source
- ⇒ Used for official production or low-run custom products
- ⇒ Can be run stand-alone or integrated with other ENC Tools



ENC Cartographer GUI  
(Micklefirth chart used with the permission of the UK Hydrographic Office)



Editing of Light Flare in ENC Cartographer

# ENC Cartographer

## FUNCTIONAL OVERVIEW

### Paper Chart Symbology

Paper chart grids, graticules and paper chart symbols are automatically generated when the ENC is imported into an ENC Cartographer layout. Symbology conforms to the IHOs:

- INT 1 symbols and text
- INT 2 borders and grids

### Chart Layout Definition

Chart scheming mode enables charts to be laid out without delay.

- Scheme paper chart from one of more ENCs
- Include plans of different scale and projection
- The paper chart extents can be set independently to the ENC
- All edits are recorded and stored in the layout file, the source ENC is not touched

### Feature Editing

The editing mode of ENC Cartographer comes with a set of efficient tools to apply the cartographic edits required for the paper chart.

- Text editing and formatting tool
- Line point and area drawing tools
- Powerful filter for complex feature searches
- Paper chart features identified by their S-57 ENC object and attribute combination
- Features can be edited and changed from their default symbology
- Edits can be applied to groups of features

### Additional Functions

Automatically generated from features in the ENC:

- Compass Roses with magnetic variation
- Zones of Confidence (ZOC) diagrams
- Tidal Stream Tables
- Tidal Level Tables
- Marginalia Notes

ENC Cartographer also provides:

- Standard Chart Notes library
- The ability to import other notes via text files

### Chart Display Functions

- Ability to override the SCAMIN attribute
- Function to list chart updates
- Full set of INT1 symbols

### Supported Formats and Products

- Input: S-57 ENC base and update cells (.000, .00n)
- Output: TIFF, GeoTIFF, Bitmap, SVG, Post Script or directly to a printer or plotter

**SYSTEM RECOMMENDATIONS:** Microsoft Windows 2000/XP      RAM: 1GB  
P4 Processor 2GHz (3+GHz optimal)      Video Card: OpenGL 2.1 compliant with 512MB of RAM

## YOUR ENC CARTOGRAPHER DEALER



**SevenCs GmbH · Ruhrstraße 90 · D-22761 Hamburg**  
Phone +49 (0)40 851 72 40 · Fax +49 (0)40 851 72 4 79 · sales@sevencs.com · www.sevencs.com